

# Relocation of SEELine

**Justin Rollins**

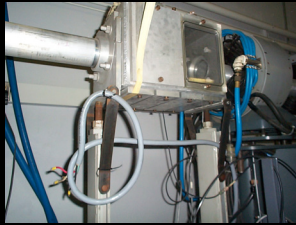
Prairie View A&M University

REU 2004 Cyclotron Institute, Texas A&M University

Advisor: Dr. Henry Clark

## Beam Boxes

Old Beam Box

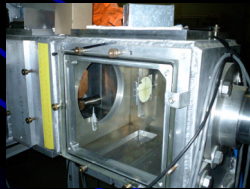


Refurbished and Assembled Beam box

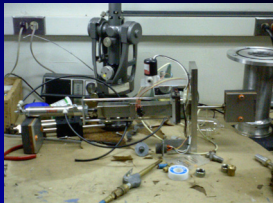


## Beam box Components

Viewer

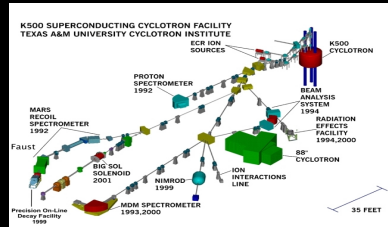


Faraday Cup

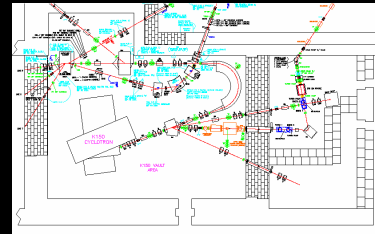


In order for the upgrade of the 88" Cyclotron to take place the existing SEELine must be moved to a different location.

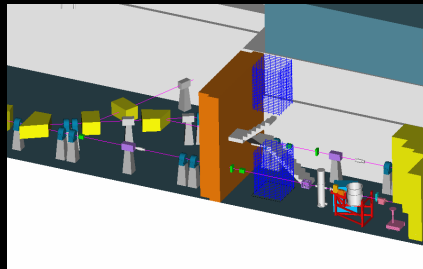
Before SEELine can be relocated the beam line must be set up and tested.



Current Beam Line Layout



Future K150 Layout

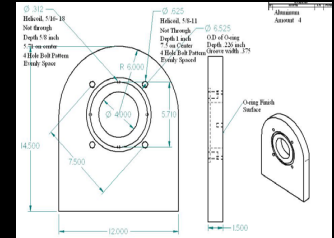


Future SeeLine Location

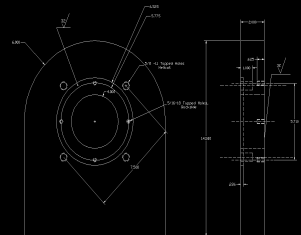
## Beambox End Caps

Design Specifications:

- Connect to existing beam box
- 2 inch thick aluminum end cap
- Connect ASA to ISO
- Contain O-ring on ASA side
- O-ring finish surface on ISO side.



Preliminary Design



AutoCad Design



Beam Box Side



Beam Line Side

